

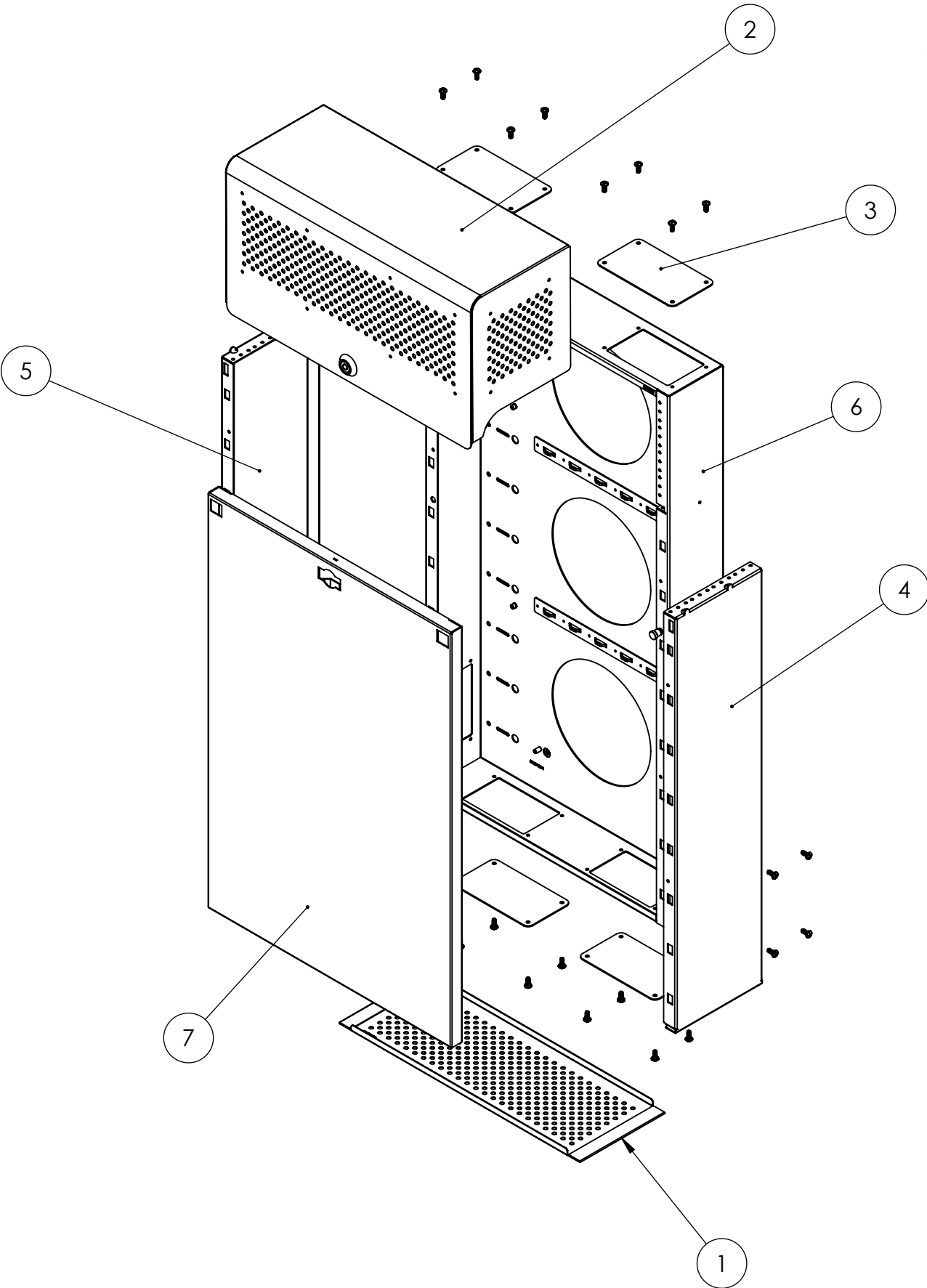
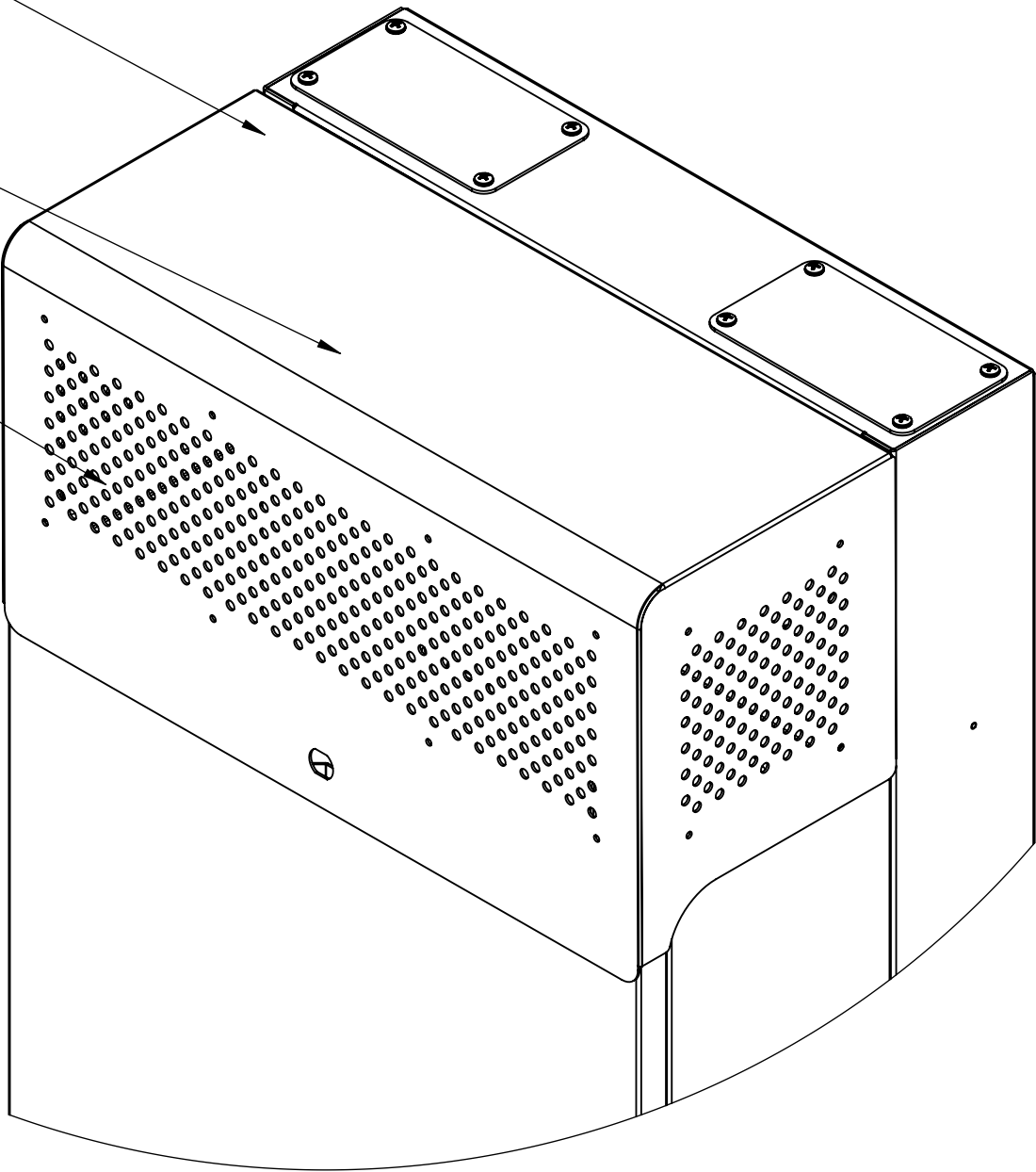
ITEM #	PART #	DESCRIPTION	QTY.
1	20-202-4	VENT TRAY	1
2	20-234-4	COVER	1
3	20-238-4	RECTANGULAR PLATE	6
4	20-247-4	RIGHT SIDE PANEL TALL	1
5	20-248-4	LEFT SIDE PANEL TALL	1
6	20-255-4	BACKPLATE TALL	1
7	20-256-4	FRONT PANEL TALL	1

REVISIONS			
REV.	DESCRIPTION	DATE	APPROVED
2	INITIAL PRODUCTION RELEASE	3/6/2011	TW
4	REVISION 4 PRODUCTION RELEASE	5/26/2014	TW

4U FOR EQUIPMENT MOUNTED  
VERTICALLY ON BACKPLATE

2U FOR EQUIPMENT MOUNTED  
VERTICALLY INSIDE OF BACKPLATE

4U FOR EQUIPMENT MOUNTED  
VERTICALLY ON SIDE PANELS

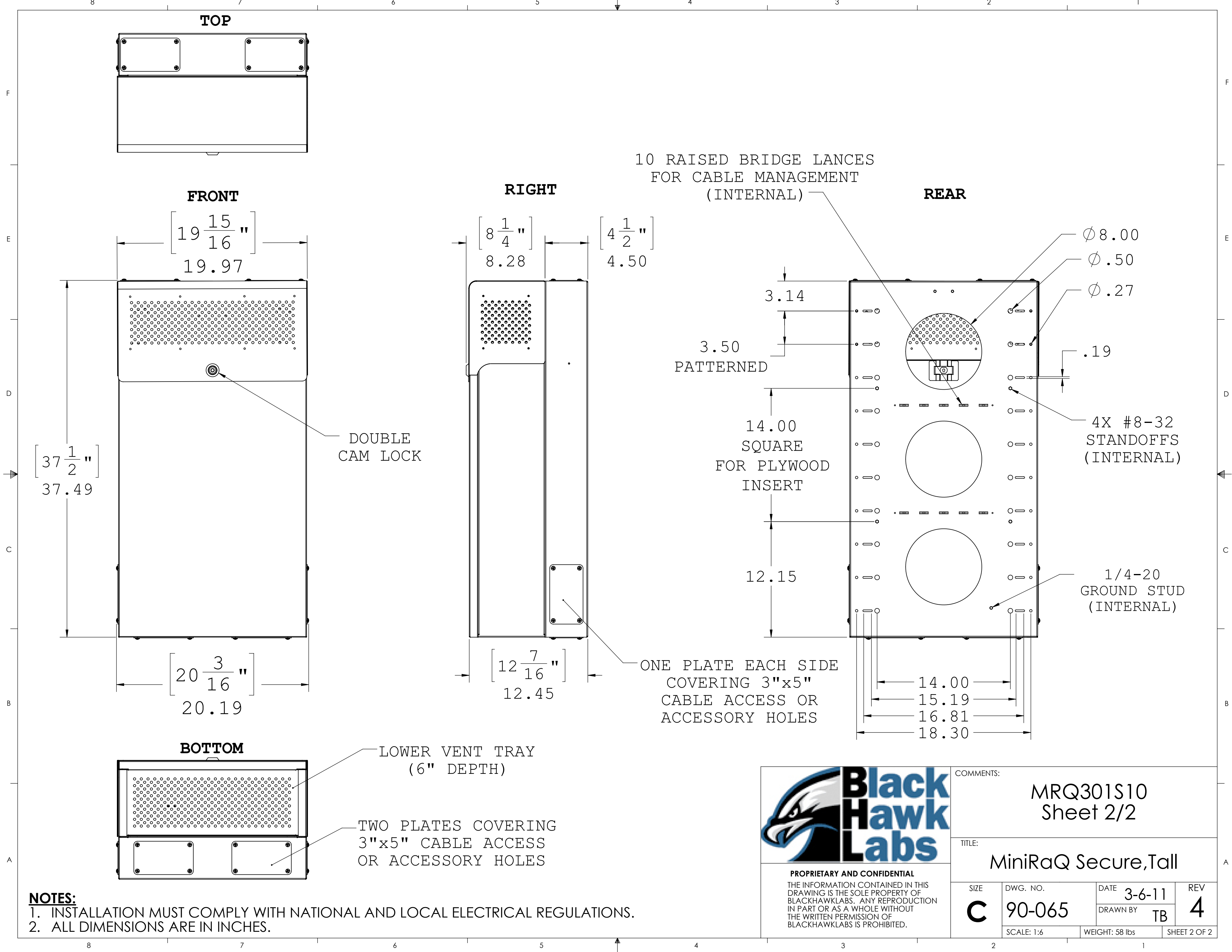


- NOTES:**
1. INSTALLATION MUST COMPLY WITH NATIONAL AND LOCAL ELECTRICAL REGULATIONS.
  2. ALL DIMENSIONS ARE IN INCHES.
  3. NET WEIGHT OF BASIC UNIT IS 58 LBS.
  4. CABLE ENTRY IS TOP, BOTTOM AND SIDES OF UNIT.
  5. EQUIPMENT MOUNTING IS 12-24 TAPPED IN EIA PATTERN.
  6. CAPACITY IS 400 LBS. WHEN MOUNTED AS RECOMMENDED.
  7. CONSTRUCTION IS HEAVY GAUGE C.R. STEEL WITH BLACK POWDER COAT FINISH.



**PROPRIETARY AND CONFIDENTIAL**  
THE INFORMATION CONTAINED IN THIS  
DRAWING IS THE SOLE PROPERTY OF  
BLACKHAWKLABS. ANY REPRODUCTION  
IN PART OR AS A WHOLE WITHOUT  
THE WRITTEN PERMISSION OF  
BLACKHAWKLABS IS PROHIBITED.

COMMENTS:			
MRQ301S10 Sheet 1/2			
TITLE: MiniRaQ Secure, Tall			
SIZE <b>C</b>	DWG. NO. <b>90-065</b>	DATE <b>3-6-11</b>	REV <b>4</b>
SCALE: 1:8		WEIGHT: 58 lbs	SHEET 1 OF 2



**PROPRIETARY AND CONFIDENTIAL**  
THE INFORMATION CONTAINED IN THIS DRAWING IS THE SOLE PROPERTY OF BLACKHAWKLABS. ANY REPRODUCTION IN PART OR AS A WHOLE WITHOUT THE WRITTEN PERMISSION OF BLACKHAWKLABS IS PROHIBITED.

COMMENTS:

MRQ301S10  
Sheet 2/2

TITLE:

MiniRaQ Secure,Tall

SIZE <b>C</b>	DWG. NO. <b>90-065</b>	DATE <b>3-6-11</b>	REV <b>4</b>
		DRAWN BY <b>TB</b>	
	SCALE: 1:6	WEIGHT: 58 lbs	SHEET 2 OF 2